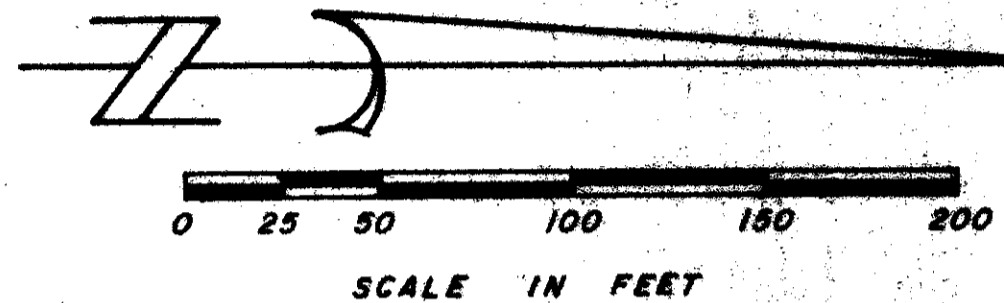


50/102

50/102

PART OF A PLANNED UNIT DEVELOPMENT
KINGS POINT PLAT NO. THIRTEEN
 A PART OF THE S.E. 1/4 OF SECTION 23
 TOWNSHIP 46 SOUTH, RANGE 42 EAST
 PALM BEACH COUNTY, FLORIDA

EASEMENT ENCROACHMENT DETAIL



CURVE DETAILS

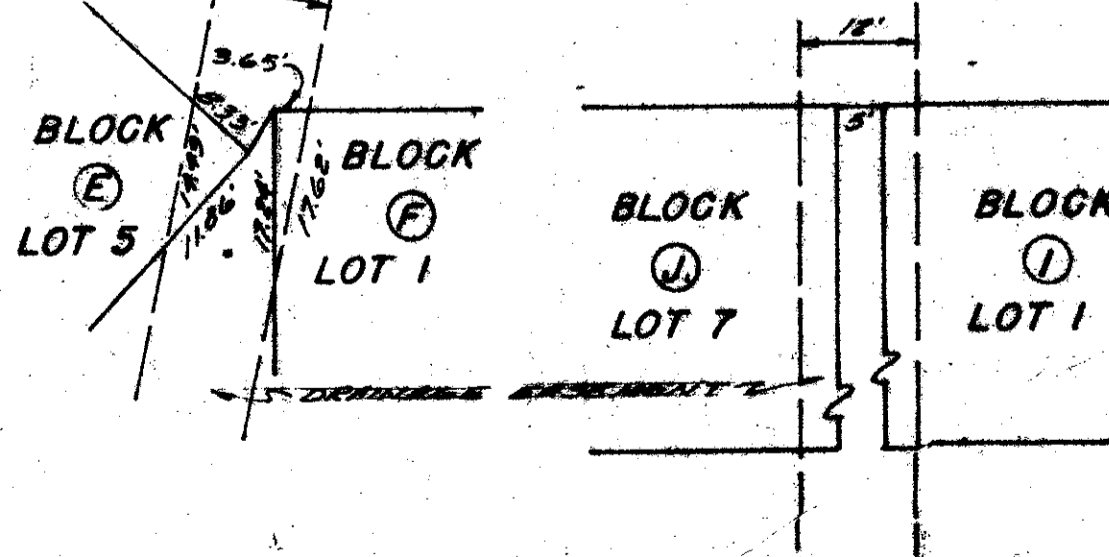
CURVE NO.	RADIUS	Δ	ARC
1	30.0	90°	27.18
2	50.0	90°	71.42
3	50.0	87°31'	64.14
4	50.0	89°17'	61.33
5	50.0	87°05'	58.84
6	75.0	87°05'	84.74
7	50.0	77°04'	45.54
8	50.0	67°52'	35.54
9	75.0	67°52'	59.34
10	50.0	63°56'	37.87
11	50.0	50°	28.18
12	50.0	44°44'	21.87
13	50.0	35°14'	15.34
14	75.0	35°14'	25.34
15	50.0	25°52'	15.34
16	50.0	17°21'	10.34
17	50.0	10°41'	5.34
18	67.66	15°36'	10.34
19	45.66	15°36'	8.34
20	50.0	90°	71.42
21	30.0	77°31'	26.75
22	30.0	17°21'	10.34
23	30.0	17°21'	10.34
24	30.0	10°41'	5.34
25	50.0	10°41'	5.34
26	50.0	17°21'	10.34

Subdivision: Kings Point 13
 Block: 50 PAGE 102
 Flood Zone: B FLOOD MAP # 3208
 Quad: 37 B ZONING RM
 SE: Yes ZIP CODE 33445
 PUD NAME: Kings Point Plat No. Thirteen

PREPARED BY:
 E. BRETT CULPEPPER OF
 CFS and ASSOCIATES, INC.
 CONSULTING ENGINEERS
 FT. PIERCE, FLORIDA

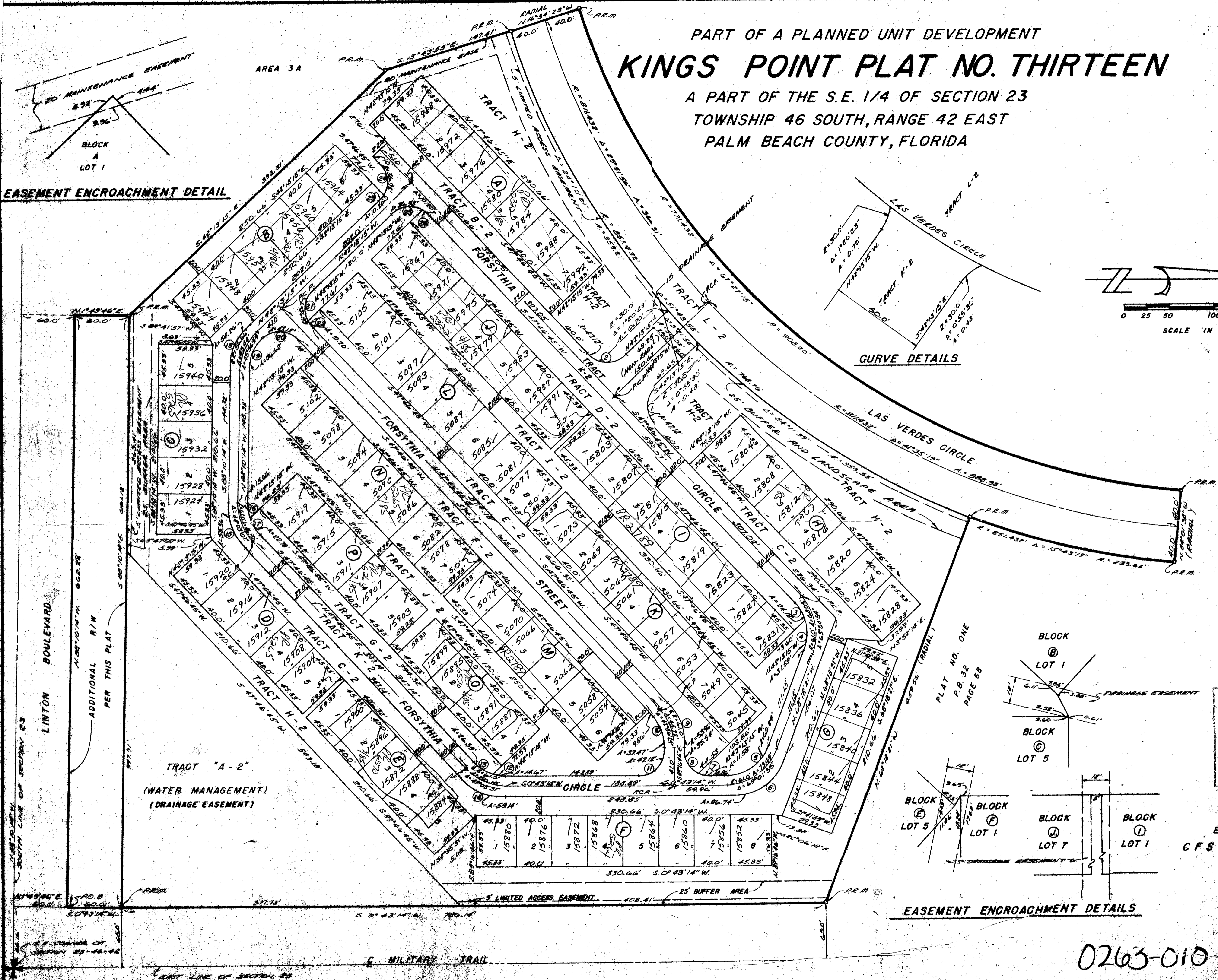
(SHEET 2 OF 2)

EASEMENT ENCROACHMENT DETAILS



0263-010 50/102

Kings Point #13



DRAWING NUMBER

DRAWING NUMBER

DRAWING NUMBER

PLAN HOLD CORPORATION • IRVINE, CALIFORNIA
 RECORDED BY NUMBER 07544
 RECORD DATE 04/18/02